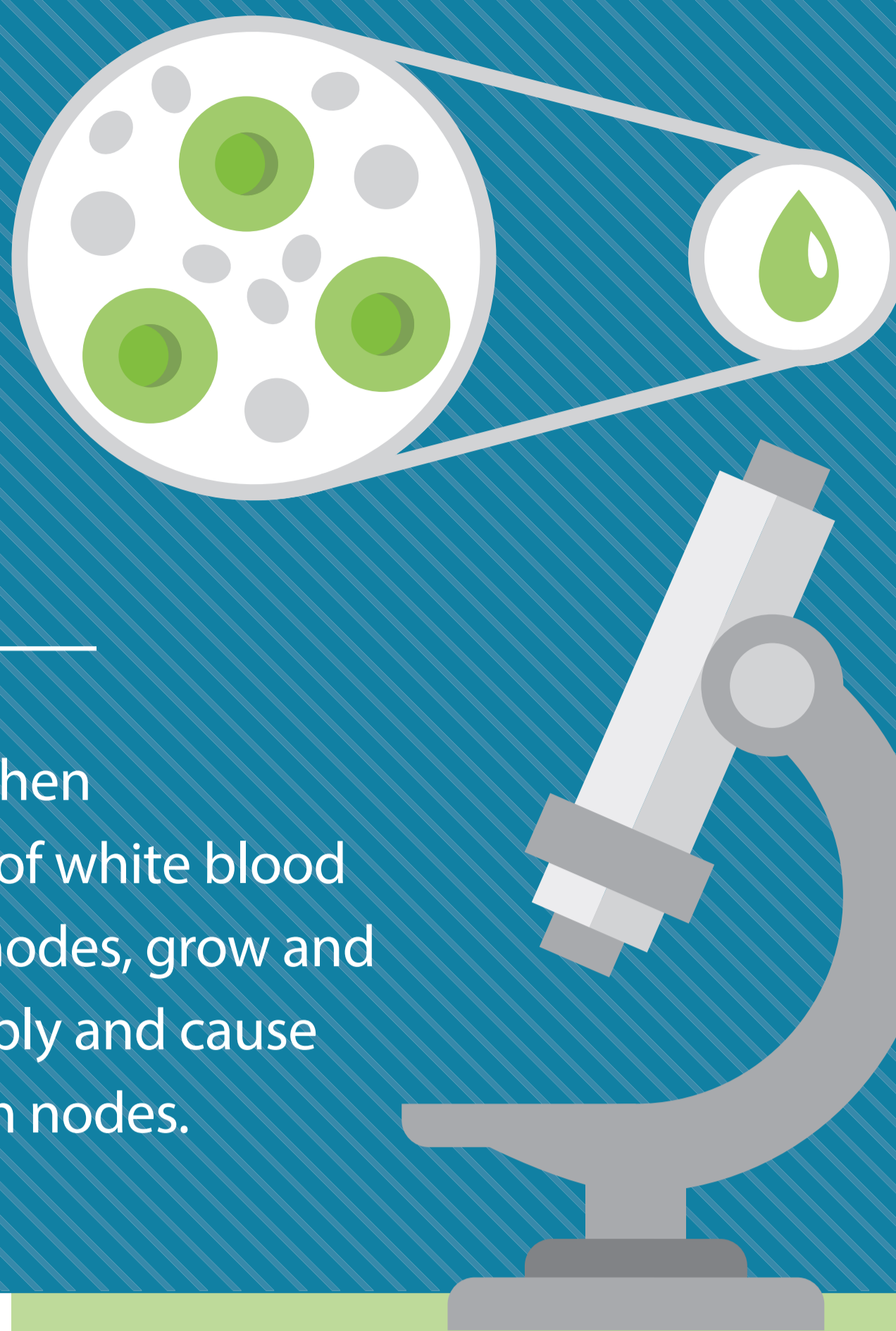


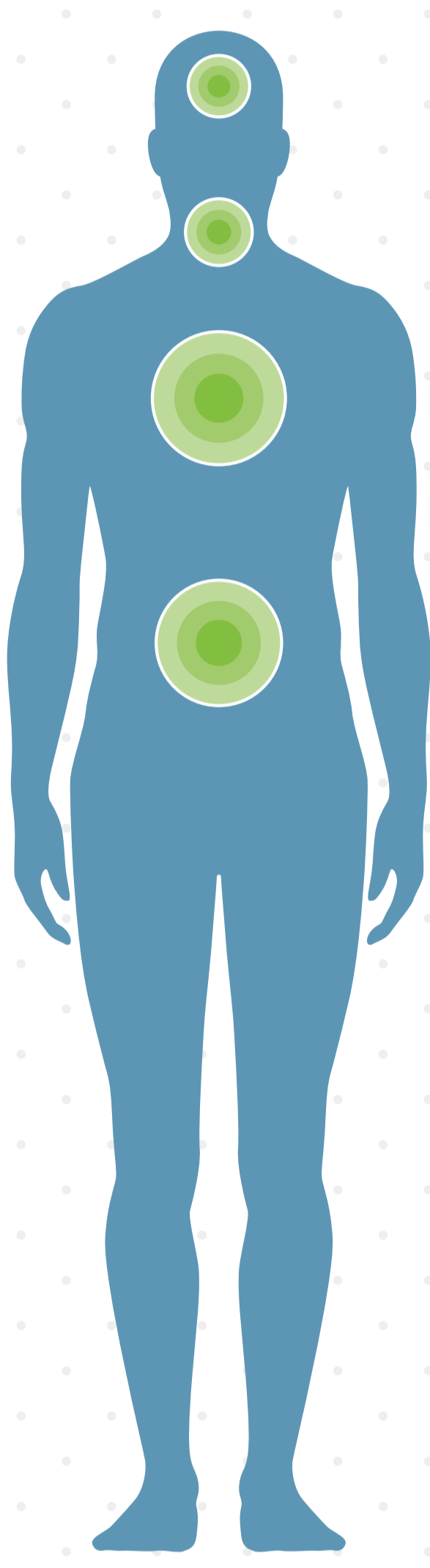
# What You Should Know About LYMPHOMA



Lymphoma is the **most common** blood cancer.



Lymphoma occurs when lymphocytes, a type of white blood cell found in lymph nodes, grow and multiply uncontrollably and cause swelling of the lymph nodes.



## SYMPTOMS

- Swollen lymph nodes
- Intermittent fevers
- Drenching night sweats
- Feeling tired all the time
- Unexplained weight loss
- Decreased appetite
- Generalized itching
- Abdominal pain or swelling
- Coughing, shortness of breath, chest discomfort

## 2 MAIN TYPES

### HODGKIN LYMPHOMA (HL)

Uncommon, has characteristic “Reed-Sternberg” cells

### NON-HODGKIN LYMPHOMA (NHL)

8th most common cancer in US, many subtypes with different appearances under the microscope

## RISK FACTORS

#### HL LYMPHOMA

**GENDER**  
Men have a slightly greater chance of developing the disease

**AGE**  
20s and early 30s or over age 55

**COMPROMISED IMMUNE SYSTEM**

**GEOGRAPHY**  
Most common in North America and northern Europe

**SOCIOECONOMIC STATUS**  
higher socioeconomic background

#### NHL LYMPHOMA

**GENDER**  
Men have a slightly greater chance of developing the disease

**AGE**  
Increases with increasing age

#### AUTOIMMUNE DISEASE

**VIRUSES**  
HIV/AIDS, human T-cell leukemia/lymphoma virus

**CHEMICALS**  
Exposure to certain chemicals such as pesticides and fertilizers

**IMMUNOSUPPRESSANT DRUGS**

## TREATMENT OPTIONS



Radiation Therapy



Immunotherapy-Targeted Therapy



Chemotherapy



Stem Cell Transplant



SOURCE [www.cancer.org](http://www.cancer.org)