



CITY OF HOPE
PROSTATE CANCER
OUTCOME
SUMMARY

City of Hope's survival for prostate cancer significantly exceeds SEER National survival at all stages.*

City of Hope Prostate Cancer Program: Exceeding national survival rates



Kevin G. Chan, M.D., is a urologic oncologist and the head of reconstructive urology.

City of Hope is a National Cancer Institute-comprehensive care center, the highest designation that recognizes our ongoing commitment to cancer treatment, research and education. As a founding member of the National Comprehensive Cancer Network, City of Hope's Prostate Cancer Program delivers leading-edge treatments through groundbreaking evidence-based research, onsite clinical trials, and comprehensive and personalized care for each patient. We are experts at treating advanced and recurrent disease, and we believe that the best patient care comes from collaboration. When your patient arrives at City of Hope, our multidisciplinary team becomes your partner in seeking optimal outcomes. It is our multidisciplinary approach, combined with our dedication to advancing cancer care, that results in our superior survival outcomes data compared to SEER National, making City of Hope the best choice for prostate cancer treatment.

We've received national recognition for 15 consecutive years as **one of the best cancer hospitals by U.S. News & World Report**, and received Magnet® recognition from the American Nurses Credentialing Center.

Our multidisciplinary approach to treat prostate cancer includes:

- One of the largest programs of its kind in the western United States and our leadership and experience in robotic prostate surgery
- Our surgeons' expertise in minimally invasive and nerve-sparing prostatectomies, which reduce discomfort and recovery time, while preserving urinary and sexual function
- Highly precise radiation therapy delivery that can target the cancer while avoiding nearby healthy tissue, preserving bladder and bowel control functions
- A wide portfolio of drugs that can fight cancer better with fewer side effects
- A dedicated continence recovery program to help men regain urinary function after treatment
- Sophisticated active surveillance monitoring for men with low-risk, slow-growing prostate cancer who do not want immediate treatment
- Ongoing research and clinical trials of promising new therapies
- Long-term survivorship and follow-up program focused on minimizing recurrence risk and improving quality of life

Comprehensive care throughout Southern California

Whether receiving care at our state-of-the-art hospital in Duarte, California, or across our expansive clinical network of more than 35 cancer-focused locations in the Southern California region, patients have seamless access to a broad suite of prostate services.

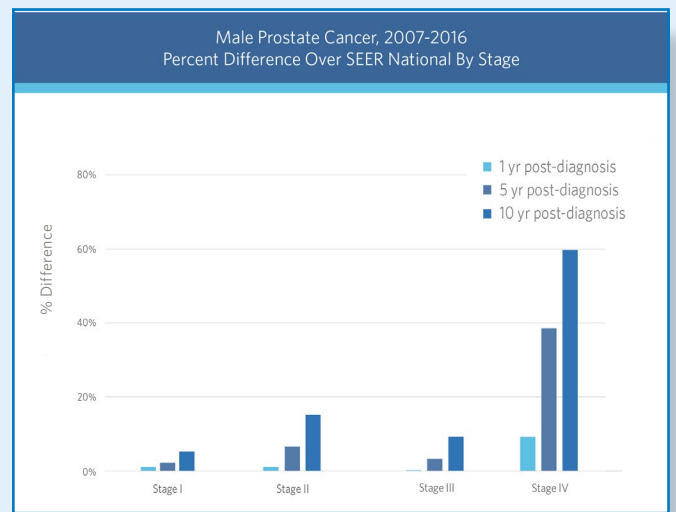
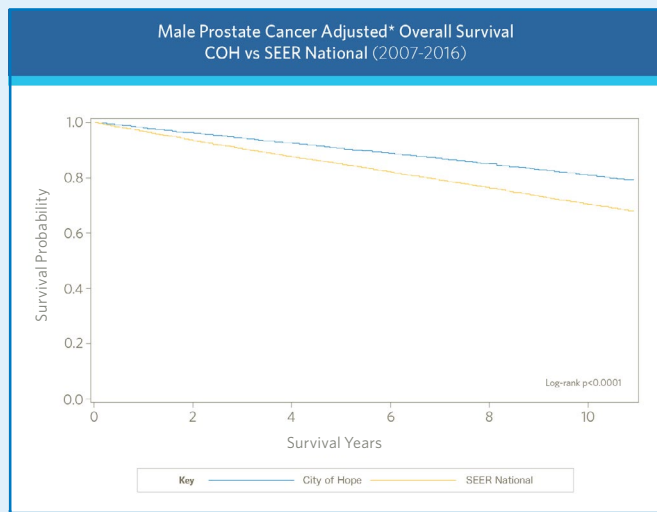
Why we measure outcomes

We measure outcomes because we are constantly challenging ourselves to improve care, inform clinicians with a measure of our performance and to prove our value to patients. Our outcome measurements hold us accountable to our mission of transforming the future of health by eliminating cancer.

City of Hope exceeds SEER National prostate cancer survival rates at all stages (Stages I-IV)

City of Hope's survival rate exceeds SEER National at all stages

Percent difference between age and race adjusted** overall survival estimates by stage†



*Proportional hazards regression adjusting for age (75+, 65-74, 55-64, 45-54 vs. 15-44), race (Black, other vs. white) and stage (II/III/IV vs. I)

**Proportional hazards regression survival estimates adjusting for age category (15-44, 45-54, 55-64, 65-74, 75+) and race (white, Black, other)

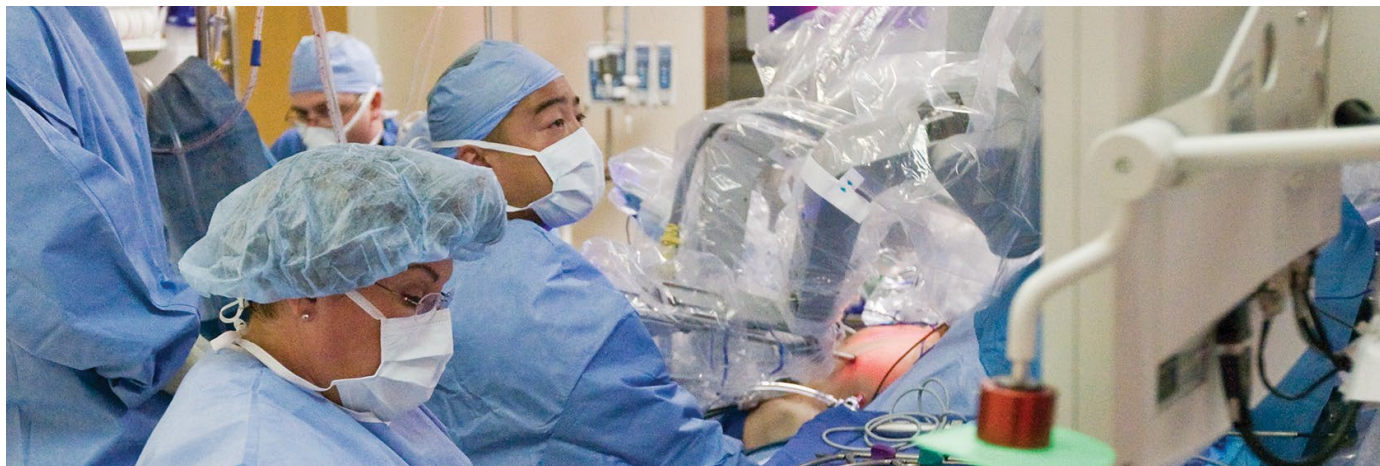
The National Cancer Institute's Surveillance, Epidemiology and End Results (SEER) Program

An authoritative source on cancer incidence and survival, the SEER Program provides cancer statistics to reduce the cancer burden among the U.S. population. It is supported by the Surveillance Research Program, which provides national leadership in cancer surveillance using analytical tools and methodological expertise in collecting, analyzing, interpreting and disseminating reliable population-based statistics.

The Prostate Cancer Program at City of Hope treats thousands of patients each year. Our five-year survival rate for prostate cancer is very close to 100%.

† Data were derived from City of Hope cancer registry (CNeXT) and SEER November 2019 Research Data Files as the comparator. All City of Hope | Duarte patients were diagnosed from 2007 through 2016, and the City of Hope follow-up cutoff date was 12/31/2017, to align with SEER data. Survival time was based on first occurring BCA diagnosis during the time period of interest.

Utilizing groundbreaking treatments to achieve optimal outcomes in prostate cancer



Clayton S. Lau, M.D., is the Pauline & Martin Collins Family Chair in Urology and the director of the Prostate Cancer Program.

With one of the largest prostate cancer programs in the western United States, City of Hope is committed to providing patients who have prostate cancer, the second most commonly diagnosed cancer in men in the United States, with optimal outcomes. A patient's prostate cancer is every bit as unique as they are, and that is why prostate cancer treatment at City of Hope is focused on the patient and their loved ones.

This means our physicians will personally consult with patients about their disease, treatment options and desired outcomes. Afterward, our multidisciplinary team of specialists will work together to discuss, design and deliver an individual treatment plan to best meet those goals.

Innovative treatments we use to treat prostate cancer

Surgery — Prostatectomy

- Our surgeons have expertise in minimally invasive and nerve-sparing prostatectomies, which reduce discomfort and recovery time, while preserving urinary and sexual function.
- We are leaders in minimally invasive, robotically assisted prostatectomies, having performed more than 13,000 procedures.

Radiation therapy

- We use highly precise radiation therapy delivery that can target the cancer while avoiding nearby healthy tissue, preserving bladder and bowel control functions.
- Image-guided external radiation systems, including TomoTherapy and TrueBeam, combine detailed imaging and radiation delivery technologies.
- Magnetic resonance imaging-guided focused ultrasound is a nonradiation technology that uses MRI to detail images of the prostate area, followed by highly focused ultrasound to heat up and destroy cancerous tissue.
- Brachytherapy involves the placement of radioactive material next to or within the tumor site.

Drug therapy

- We have a wide portfolio of drugs that are better at fighting cancer with fewer side effects.
 - **Hormone therapy:** Blocks production or activity of hormones — particularly testosterone and dihydrotestosterone, or DHT — which fuels most prostate cancer growth
 - **Chemotherapy:** Targets all rapidly dividing cells, including prostate cancer cells
 - **Targeted therapy:** Selectively attacks prostate cancer cells based on specific characteristics — such as a gene mutation
 - **Immunotherapy:** Stimulates the patient's immune system to attack cancer cells

Recovery program

- A dedicated continence recovery program to help men regain urinary function after treatment
- A survivorship program that helps people deal with long-term effects of treatment

Surveillance monitoring

- Sophisticated active surveillance monitoring for men with low-risk, slow-growing prostate cancer who do not want immediate treatment

Early access to lifesaving treatments through clinical trials

City of Hope is home to the first of five Beckman Research Institutes — renowned for driving scientific advances — and, unlike other cancer centers, has three certified good manufacturing practice (GMP) facilities on-site at our main campus location. The GMP facilities enable us to conduct translational research that blends the best of academics and medical care within a biotechnology environment. We refer to this setup as a biotechnology hybrid model, and it's designed to speed discoveries to patients by fast-tracking the commercialization of potentially life-changing new therapies. Home to more than 1,000 research investigators, our experts conduct nearly 1,000 clinical trials annually.

At City of Hope, prostate cancer clinicians and researchers collaborate extensively to develop and evaluate new therapies for better survival and quality-of-life outcomes. Our patients

have access to a wide variety of clinical trials, including new chemotherapy and targeted therapies, hormone therapies with fewer side effects, novel surgical techniques, innovative radiation approaches and new prevention strategies. These trials give current patients access to promising, leading-edge therapies and improve overall care for future patients worldwide.

City of Hope has one of the most comprehensive CAR T cell and other cellular therapy programs in the world. As one of the few institutions with the capabilities and expertise to innovate CAR T cell technology on-site through our own research and clinical trials, we have been continuously leveraging our success with our blood cancer CAR T cell treatments to develop new CAR T cell therapies for solid tumors, including prostate cancers.

Ongoing prostate clinical trials include:

ADT + abiraterone + talazoparib in mHSPC, enriched for diverse population (NCT04734730)

The goal of this Phase 2 trial, led by **Tanya Dorff, M.D.**, is to increase the efficacy of first-line therapy for men with metastatic castration-sensitive prostate cancer by adding the PARP inhibitor talazoparib to standard therapy with androgen deprivation therapy (ADT) + abiraterone acetate (abiraterone).

Oligometastatic prostate protocol (NCT03361735)

Spearheaded by **Savita Dandapani, M.D., Ph.D.**, this Phase 2 trial studies radium Ra 223 dichloride, hormone therapy (using leuprolide acetate or goserelin acetate) and stereotactic body radiation in treating patients with prostate cancer that has spread to other places in the body.

White button mushroom trial for BCR and active surveillance (NCT04519879)

This Phase 2 trial studies how well white button mushroom supplements work in reducing prostate-specific antigen (PSA) levels in patients with recurrent or therapy-naïve prostate cancer. Principal investigator **Clayton S. Lau, M.D.**, and his team are investigating how white button mushroom supplements may affect PSA levels, various parameters of the immune system and levels of hormones that may have a role in prostate cancer growth.

SIMCAP (Surgery in Metastatic Carcinoma of Prostate) (NCT03456843)

This randomized Phase 2 trial studies how well surgical removal of the prostate and antiandrogen therapy (with or without docetaxel) work in treating men with newly diagnosed metastatic prostate cancer.

Immunotherapy: PSCA targeted CAR T cell therapy for mCRPC (NCT03873805)

In this Phase 1 trial, **Tanya Dorff, M.D.**, and team are studying the side effects and best dose of PSCA-chimeric antigen receptor (CAR) T cells in treating patients with prostate stem cell antigen positive (PSCA+) castration-resistant prostate cancer that has spread to other places in the body (metastatic).



Leanne Burnham, Ph.D., is an assistant professor in City of Hope's Division of Health Equities.

Multiracial prostate cancer study

In order to reduce the number of preventable deaths from prostate cancer in African American men, **Leanne Burnham, Ph.D.**, is recruiting African American men to prostate cancer studies to develop precision medicine approaches that incorporate racial and ethnic genetic differences.

This is part of the vital and ongoing work in health equity to increase diversity in clinical trials. At City of Hope, the Division of Health Equities under the direction of **Rick Kittles, Ph.D.**, is committed to building strong bidirectional relationships with our neighboring communities and recognizing the importance of education and trust to ensure that all people have opportunities to attain their full health potential to lead optimal lives.

To refer a patient to a clinical trial, call **626-218-1133** or visit **[CityofHope.org/clinicaltrials](https://www.cityofhope.org/clinicaltrials)**.

Center for Survivorship and Outcomes — helping patients improve their quality of life, beyond hospital care



At City of Hope, we recognize that care doesn't end once a patient steps out of the hospital doors. We are committed to lifelong follow-up of prostate cancer patients to develop better treatments. This research allows us to assess the challenges faced by our survivors and provide additional resources to assist their journey.

We take our survivorship seriously. Our comprehensive survivorship program continues to support patients and their families through treatment and after. Our ongoing, long-term data collection continues to inform the work we do in prostate cancer, allowing us to continually improve care by:

- Immediately addressing any postsurgical complications
- Managing any side effects that may occur
- Educating patients about appropriate nutrition, exercise and fitness
- Assisting in early detection should the cancer recur
- Connecting patients with social workers, psychologists, financial advisors or other support as needed

Prostate Cancer Support Group

The Prostate Cancer Support Group meets monthly and provides an educational and supportive environment for patients and their families to join together. All patients within City of Hope's network are welcome. The support group is facilitated by a nurse practitioner and a licensed social worker. In-person and virtual meetings are available.

Learn how City of Hope eases the financial burden of care with our Sheri & Les Biller Patient and Family Resource Center. Call **626-218-CARE (2273)**, or visit **CityofHope.org**.

Meet our Prostate Cancer Experts



- Associate Clinical Professor and Chief, Division of Urology and Urologic Oncology, Department of Surgery
- Director, Prostate Cancer Program
- Head, Retroperitoneal Surgery
- Pauline & Martin Collins Family Chair in Urology



- Urologic Oncology Surgeon
- Assistant Clinical Professor, Division of Urology and Urologic Oncology, Department of Surgery



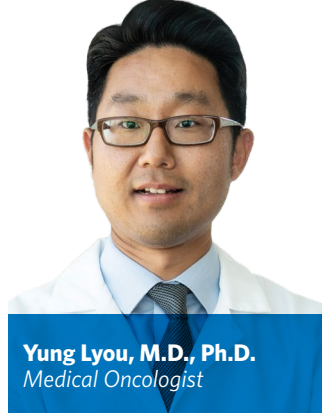
- Associate Clinical Professor, Division of Urology and Urologic Oncology, Department of Surgery
- Head, Reconstructive Urology



- Professor, Division of Urology and Urologic Oncology, Department of Surgery
- Director, Urologic Oncology and Robotic Surgery Fellowship
- Clinical Documentation and Analytics Lead



- Associate Professor, Department of Medical Oncology & Therapeutics Research
- Section Chief, Genitourinary Disease Program



- Assistant Professor, Department of Medical Oncology & Therapeutics Research



- Associate Professor, Department of Radiation Oncology



- Associate Professor, Department of Radiation Oncology

About City of Hope

Founded in 1913, City of Hope is an independent biomedical research and treatment center for cancer, diabetes and other life-threatening diseases. As a world leader in cellular immunotherapies, including chimeric antigen receptor (CAR) T cell therapy, we are one of the few institutions in the nation that innovates CAR T cell technology through our research and clinical trials, in addition to collaborations with other academic research institutions and global biopharmaceutical companies.

City of Hope is also a global pioneer in stem cell transplantation innovation, having performed over 17,000 transplants to date with exceptional survival rates, according to the Center for International Blood & Marrow Transplant Research. Human synthetic insulin, monoclonal antibodies and numerous breakthrough cancer drugs are based on technology developed at our institution.

A National Cancer Institute-designated comprehensive cancer center and a founding member of the National Comprehensive Cancer Network, City of Hope has been



ranked among the nation's "Best Hospitals" in cancer by U.S. News & World Report for 15 consecutive years and received Magnet® recognition from the American Nurses Credentialing Center. Our main campus is located near Los Angeles, with additional locations throughout Southern California and in Arizona.

To begin the referral process for your patients with prostate cancer:

- Call **800-COH-4DRS (264-4377)**, Monday through Friday, 8 a.m. to 6 p.m., to speak with a patient referral specialist.
- Fax a referral request letter with a patient face sheet to **626-301-8432**.
- Complete an online referral request form at **CityofHope.org/refer-a-patient**.
- Visit **clinicaltrials.coh.org** or call **626-218-1133** to see if one of our clinical trials holds promise for your patients.

Epic CareLink is City of Hope's referring physician online portal.

You can use EpicCare to request patients' lab orders, as well as view lab results, visit summaries, medications, procedures, allergies and most other clinical documentation in the patient's chart. You can also upload relevant patient level documents to be reviewed by the City of Hope administrative team for inclusion in the patient's City of Hope chart.

Request your Epic CareLink account at **carelink.CityofHope.org**.

To find out more about City of Hope's Prostate Cancer Program, visit **CityofHope.org/prostate-cancer**.



1500 East Duarte Road
Duarte, CA 91010
800-826-HOPE (4673)

CityofHope.org



©2022 City of Hope and the City of Hope logo are registered trademarks of City of Hope. City of Hope strongly supports and values the uniqueness of all individuals and promotes a work environment where diversity is embraced.